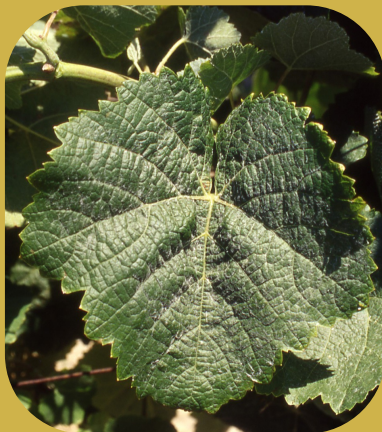


Abondant B

Wine grape variety.



Origin

This variety is cultivated in the east of France and was obtained by Mr. Wanner. Based on genetic analysis carried out in Montpellier, it would result from the crossbreeding of Madeleine royale and Kövidinka.

Use

Wine grape variety.

Name of the variety in France

Abondant

Synonymy

There is no officially recognized synonym in France nor in the other countries of the European Union, for this variety.

Regulatory data

In France, Abondant is officially listed in the "Catalogue of Vine Varieties" on the A list and classified.

Description elements

The identification is based on:

- the tip of the young shoot with a high density of prostrate hairs,
- the green young leaves,
- the shoots that have green-colored internodes,
- the large, entire adult leaves, with a slightly open petiole sinus with parallel edges or with slightly overlapping lobes, short teeth compared to their width at the base with convex sides, no anthocyanin coloration on veins, a blistered, slightly goffered leaf blade, folded near the petiole sinus, and on the lower side of blade a low density of erect and prostrate hairs,
- the round-shaped berries.

Evolution of cultivated areas in France

Year	1958	1968	1979	1988	2018
ha	21	14	3	2	0.8

Genetic profile

Microsatellite	VVS2	VVMD5	VVMD7	VVMD27	VRZAG62	VRZAG79	VVMD25	VVMD28	VVMD32
Allele 1	141	225	247	178	194	246	248	216	251
Allele 2	149	238	249	184	194	252	254	247	271

Cultivation and agronomic skills

Abondant is a vigorous variety, fertile when pruned short. Its early budding exposes it to spring frost.

Clonal selection in France

There is no certified clone for this variety yet.

Bibliographic references

- Catalogue des variétés et clones de vigne cultivés en France. Collectif, 2007, Ed. IFV, Le Grau-du-Roi, France.
- Documentary collections of the Centre de Ressources Biologiques de la Vigne de Vassal-Montpellier, INRAE - Institut Agro Montpellier, Marseillan, France.
- Dictionnaire encyclopédique des cépages et de leurs synonymes. P. Galet, 2015, Ed. Libre&Solidaire, France.

Phenology

Bud burst: 3 days before Chasselas.
Grape maturity: mid-season, 2 and a half weeks after Chasselas.

Technological potential

The bunches are large and the berries are medium to large. Abondant produces fairly neutral and ordinary white wines.



*Plantgrape, all rights reserved,
plantgrape.fr, UMT Géno-Vigne®
INRAE - IFV - L'Institut Agro Montpellier*